

ARCHITECTS  
ASSOCIATES

# Company Profile

---

105, Mar Maroun St, Horsh Tabet, Sin el Fil, Lebanon

---

t. +961 1 484 800 | f. +961 1 480 488 | [info@kzarchitects.com](mailto:info@kzarchitects.com) | [www.kzarchitects.com](http://www.kzarchitects.com)



# KZ architects associates | Architecture but more.

**KZ Architects Associates** is a long-established, high-end firm that boasts a modern approach to architecture. Based in Lebanon and opening up onto the region, we pursue an architecture that is at once sustainable and functional, aesthetic and cultural.

## COMPANY OUTLINE

We are the KZ Architects Associates, a full-service architectural firm specializing in sustainable urban and landscape design. Established in 2010, we cater to individuals and corporations from various industries, ensuring a collaborative building process and turning concepts into reality.

With over 20 years of experience producing immaculate designs, our team of highly qualified architects and engineers provide a balanced blend of science and art, appealing to both culture and modern sensibilities. The work moreover draws on an extensive knowledge in the public and private sectors, applying consciousness and specialization in design.

Following a string of prolific and successful projects, our firm expanded beyond our base in Lebanon to reach a number of countries in the Middle East and Africa. We continue to expand our outreach as we strive to create timeless architecture.

## KARL ZOUEIN

We are the KZ Architects Associates, a full-service architectural firm specializing in sustainable urban and landscape design. Established in 2010, we cater to individuals and corporations from various industries, ensuring a collaborative building process and turning concepts into reality.

With over 20 years of experience producing immaculate designs, our team of highly qualified architects and engineers provide a balanced blend of science and art, appealing to both culture and modern sensibilities. The work moreover draws on an extensive knowledge in the public and private sectors, applying consciousness and specialization in design.

Following a string of prolific and successful projects, our firm expanded beyond our base in Lebanon to reach a number of countries in the Middle East and Africa. We continue to expand our outreach as we strive to create timeless architecture.



# KZ architects associates | Architecture but more.

## Guiding Principals

At KZ Architects Associates firm, our clients are our number one priority. We make sure the job is done perfectly to ensure our clients' complete satisfaction. To provide the best possible experience, we pride ourselves on our adoption of five foolproof principals:

### 1. Professionalism

We maintain the highest level of professionalism, as well as ensure a completely ethical practice.

### 2. Innovation

We are always searching for the opportunity to innovate, being aware of the importance of conceiving and developing new and practical ideas that will grow our practice.

### 3. Planning

We like to meet our clients' expectations by planning all project aspects beforehand, sparing no detail from consideration.

### 4. Flexibility

We provide multi-disciplinary services with the help of highly qualified specialists.

### 5. Passion

We are passionate about what we do, projecting excellency throughout all of our designs, consultations, and services.

## Services We Provide

### 1. Architectural Design

Our key to successful design is the meticulous and comprehensive consideration of factors that go into building projects, such as time, costs, aesthetics, culture, geography, and more.

### 2. Structural Design

With physics on our side, we work on predicting, building, and maintaining the durability and strength of a potential or existing project.

### 3. Mechanical and Electrical Design

We work closely with our team of engineers to ensure that optimal solutions are integrated in the mechanical and electrical designs of a structure.

### 4. Landscape Design

We bring nature to your doorstep and refine its elements to create green spaces and picturesque landscapes that will take your breath away.

### 5. Interior Design

We work closely with you, tuning into your tastes and comforts, to transform rooms and corridors into a stylish living space.

### 6. Urban Planning

With our multi-professional team, we focus on all sustainability, accessibility, technical, and economical elements that go into designing urban areas.

### 7. Specialized Design

From lighting to acoustic, and much more, we partner up with you to ensure beautiful and sustainable specialized designs for your project.

At KZ Architects Associates, we handle all phases of project construction from conceptual design, consultancy, to supervision. We have passionately completed projects of all kinds: residential resorts, residential complexes, private villas, towers, hotels, restaurants, offices, public buildings, sports facilities, and much more. You can trust us with the entire process.

# Hotels

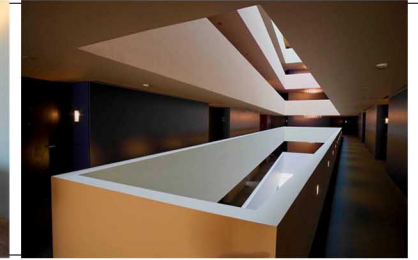
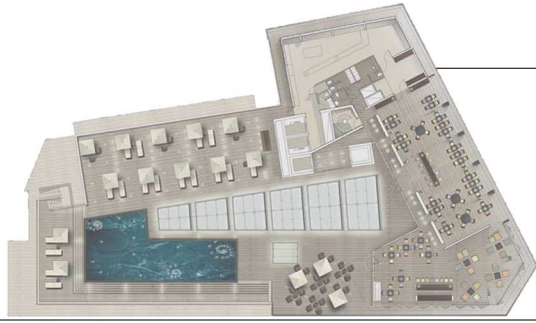
---



ARCHITECTS  
ASSOCIATES

---

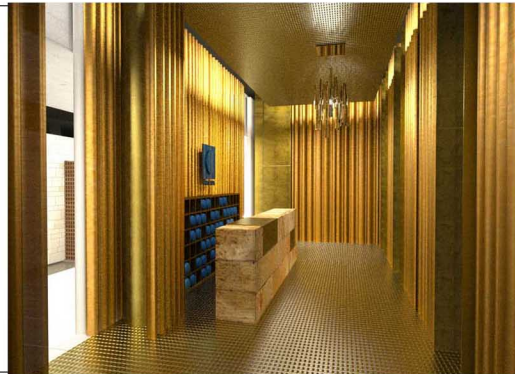
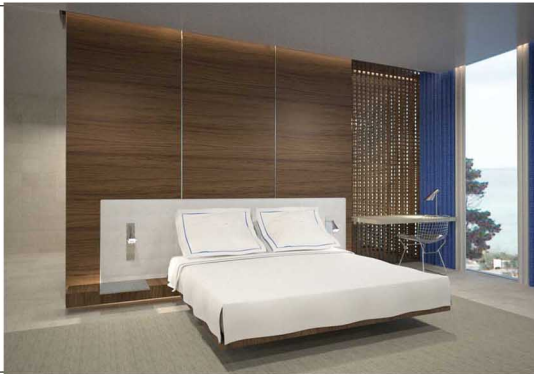




At the heart of downtown Beirut's Central District, Hilton Hotel is at a short walk from the waterside. The vibrant shopping of Beirut Souks is one block from the door and two kilometers from Gemmayzeh Street nightlife. It features amazing Mediterranean views from the rooftop pool, the fitness and wellness centers. Hilton's stylish environment features an outdoor terrace, and a Lobby Lounge Bar for relaxed cocktails, quality wines, and refreshing brews.



Vichy SPA Hotel features Deluxe rooms, Junior Suites, and Suites, with access to an indoor hydropool. Vichy SPA Hotel is dedicated to the overall health, with its signature treatment. It combines the modern spaces of Vichy SPA with Byblos traditional spirit and look.





Characterized by minimal stone architecture that integrates naturally into the green hill of Fataa, Vivaly Wellbeing Resort is designed to cater to your every need while on a retreat or vacation. This magical resort is carved into the hillside to provide a serene stay for anyone that ventures in. With natural landscapes and an ocean-view from all bungalows, rooms, and suits, Vivaly Wellbeing Resort features numerous spas, health restaurants, a church, and ecological technology to create a refreshing, secluded, and invigorating visit.

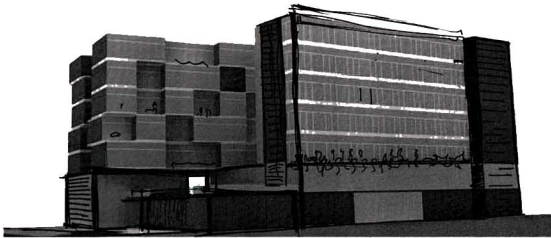
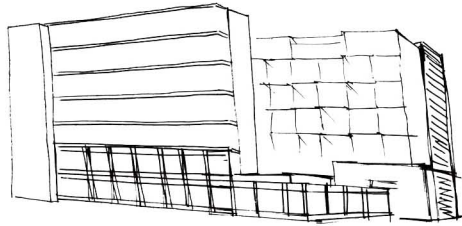




Nestled in the green valleys of Mount Lebanon, Located directly on the side of a river, Mokhtara Riverside is a BED & BREAKFAST getaway, featuring traditional architecture bungalows, F & B Outlet, and several outdoor activities. The traditional look combines with a modern interior to match the modern lifestyle.







# Resorts

---



ARCHITECTS  
ASSOCIATES

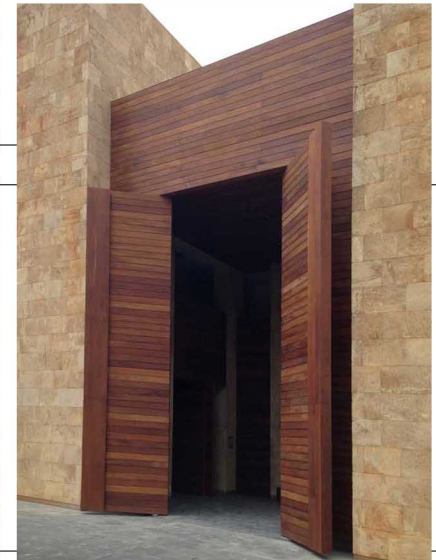
---



Adorned by the Mediterranean sea, the sea-front Byblos Sud project focuses on a lavish social integration. Nestled in the heart of the ancient city of Byblos, the overall disposition of the villas and luxurious buildings make space for recreational secluded natural grottos, parks, and the beach. A community peppered with a fitness club, an indoor Hydro pool, and a spa, a combination we like to consider heaven on Earth.



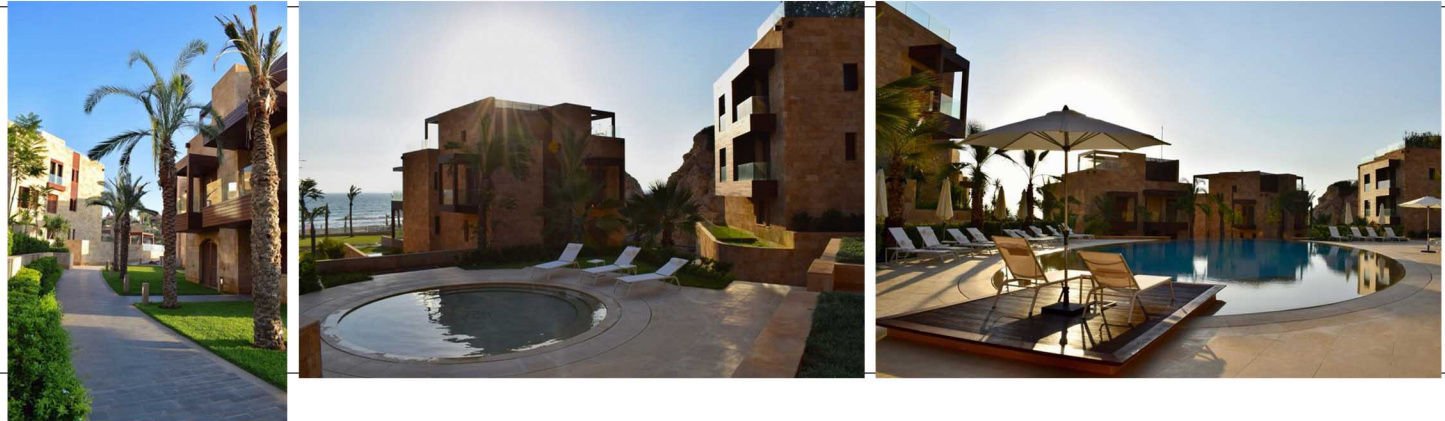








A sun-kissed paradise refreshed with the Mediterranean breeze, Byblos Beach Village comprises a collection of lavish simplexes and fantasy-like villas. Designed to accommodate all recreational pleasures, privacy is its number one priority. From gourmet restaurants, ponds, gardens, the beach, and water sports activities, Byblos Beach Village is simply a sea-front green paradise.















# Villas & Private Residences

---



ARCHITECTS  
ASSOCIATES

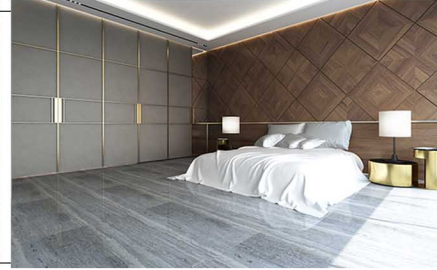
---



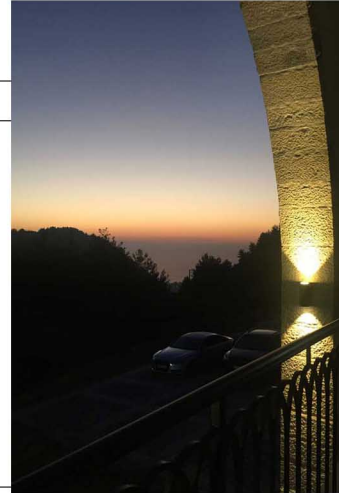
Peppered with arches to create the perfect blend of traditional and modern, Villa Noura is a project designed to create hominess in a luxurious environment. Including a pool, a view onto the coastlines of Jounieh and Beirut, and exterior walls, windows, and doors with built-in wooden shutters, this villa is a gem nestled on a peaceful and serene hill in Adma, Keserwan.















# Residential Complexes

---



ARCHITECTS  
ASSOCIATES

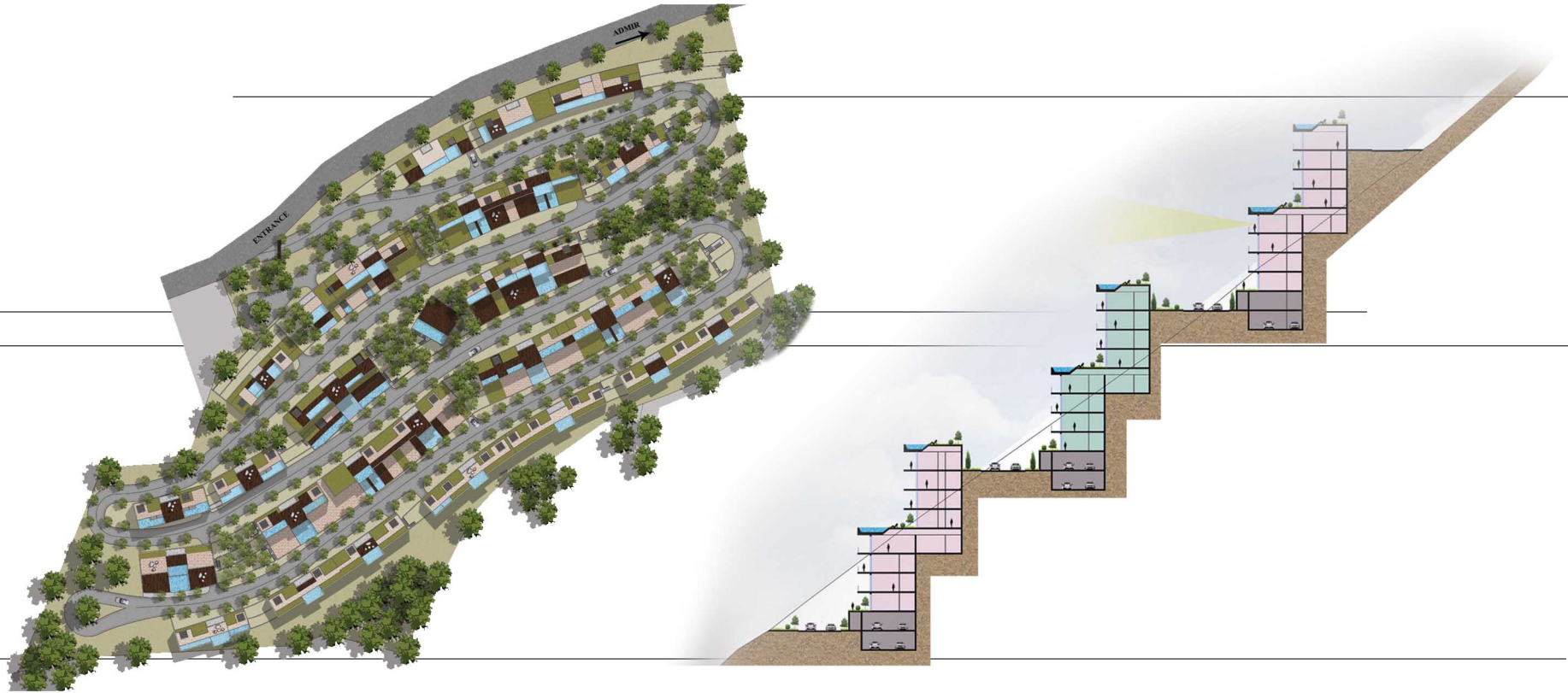
---





Imagine your favorite nature dense vacation place. Now imagine it was your home. With Balvert Residences, dreams come to reality. With a view projecting onto Ballouneh's finest pine trees and the ocean, this nine building gated residential community is sure to leave you in awe. Equipped with communal and private gardens, the buildings retain an exceptional natural stone cladding exterior with red brick roofs, keeping everything feeling homey.





# Residential Towers & Buildings

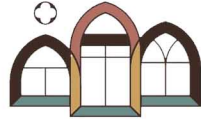
---



ARCHITECTS  
ASSOCIATES

---





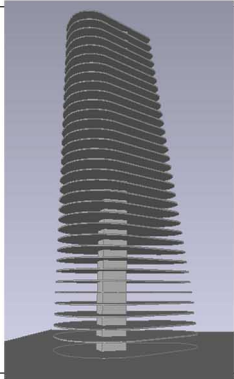
## LES DÔMES DE GHAZIR

[www.lesdomesdeghazir.com](http://www.lesdomesdeghazir.com)

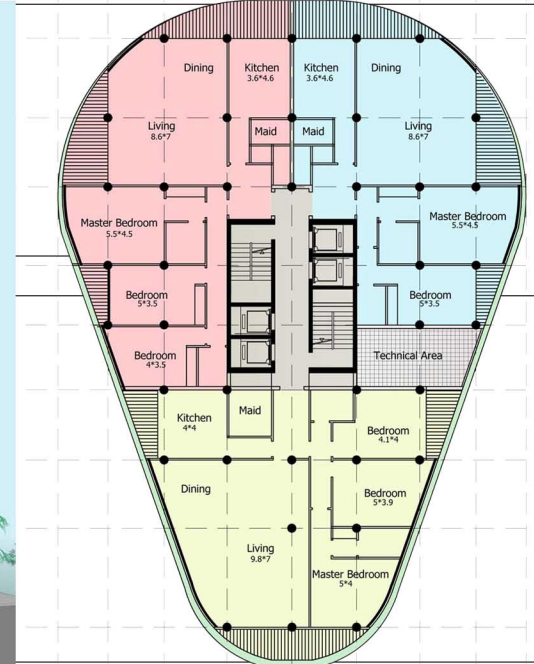
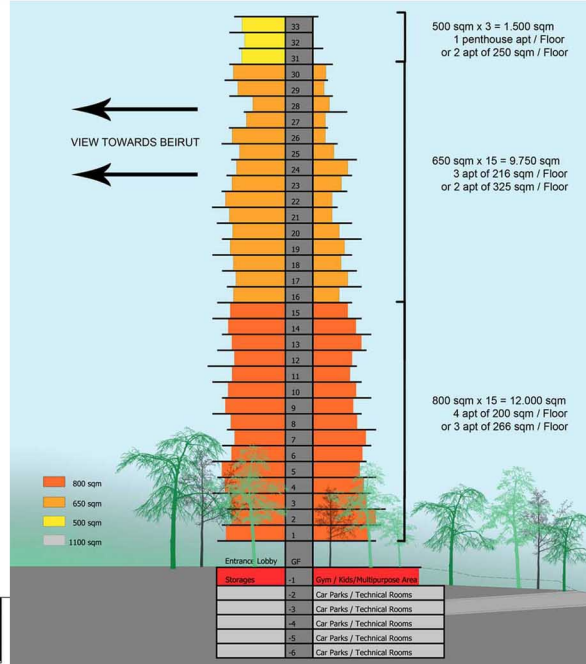
Sitting in the heart of Keserwan, Les Domes de Ghazir is a traditionally modern residential community built to elicit a historical feel that effortlessly blends in with the 21st century. Built strategically to include short pathways to the town souk and church, this community with a deep-rooted Lebanese cultural heritage brings you history in the present.







31	
30	
29	
28	
27	
26	
25	
24	
23	
22	
21	
20	
19	
18	
17	
16	
15	
14	
13	
12	
11	
10	
9	
8	
7	
6	
5	
4	
3	
2	
1	
GF	Entrance/Lobby
-1	Gym / Multipurpose Area / Kids / Storage
-2	Spa / Retail Shops - Restaurants
-3	Car Parks / Technical Rooms
-4	Car Parks / Technical Rooms
-5	Car Parks / Technical Rooms
-6	Car Parks / Technical Rooms



# Office Towers & Buildings

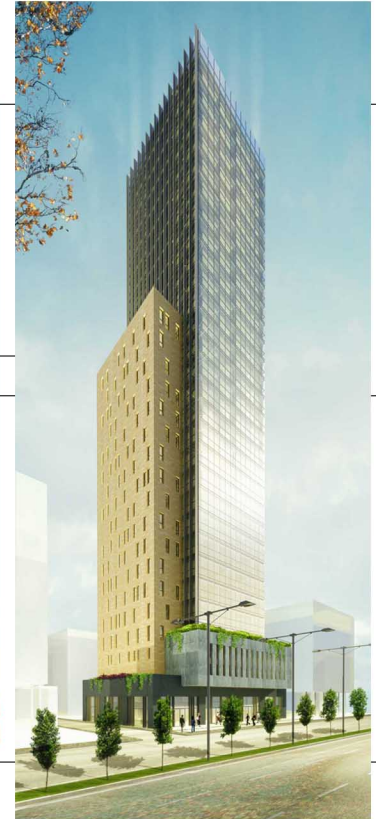
---

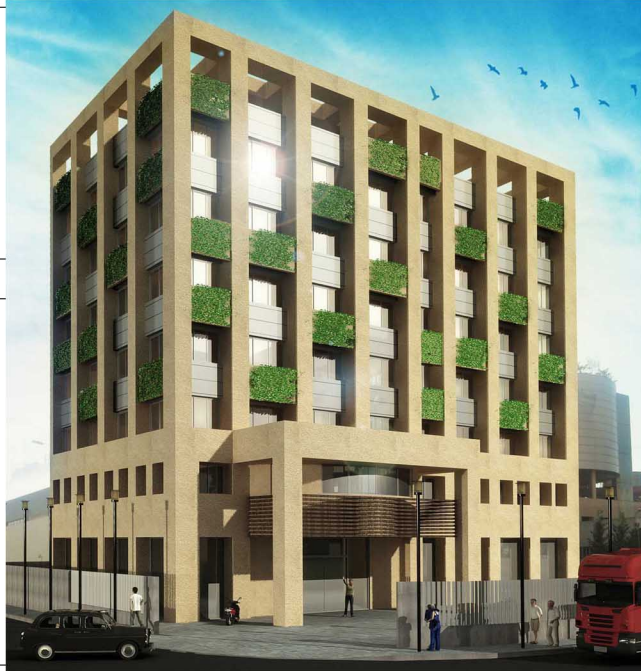


ARCHITECTS  
ASSOCIATES

---

Creating a landmark is designing Skaya Tower. Elegantly beautifying the streets of Tartous, Skaya Tower holds the title of the tallest building on the coast of Syria. Being an astonishing 33 stories high, Skaya Tower, designed to have a blended look of modern and traditional, includes recreational spaces alongside office spaces, creating the perfect mix of work and play. Fitting into the metropolitan city of Tartous, Skaya Tower is the definition of the sky is the limit.





Location: **Sin el Fil, Lebanon**

Client: **PWC Fattal**

Date: **2014**

Built-up Area: **2.500 sq.m.**

Construction Cost: **USD 1.500.000**

# F & B Outlets

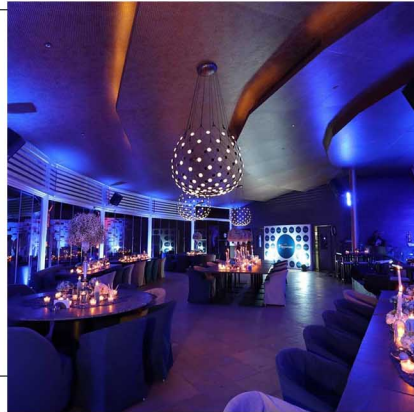
---



ARCHITECTS  
ASSOCIATES

---







# Interior Design

---



ARCHITECTS  
ASSOCIATES

---

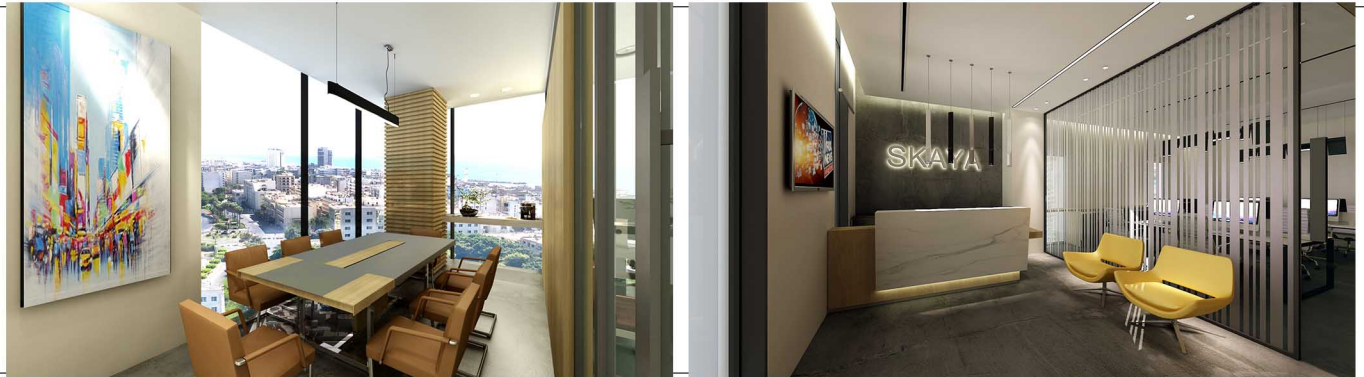
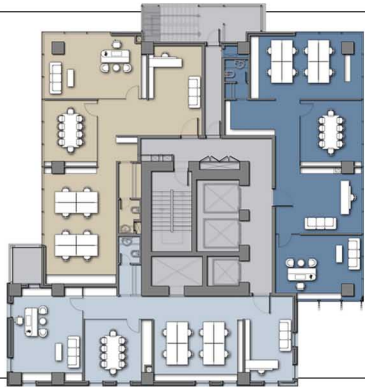




















# Public Buildings

---



ARCHITECTS  
ASSOCIATES

---

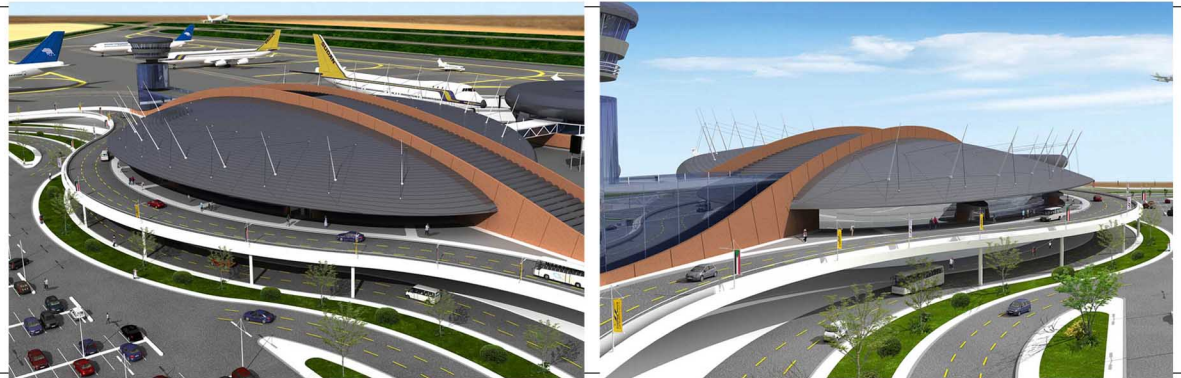
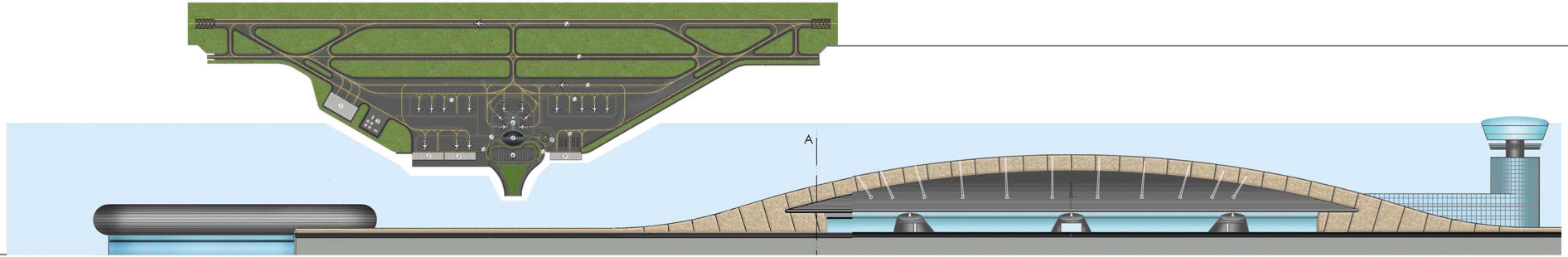
# Yahchouch Cultural, Social, and Sports Center













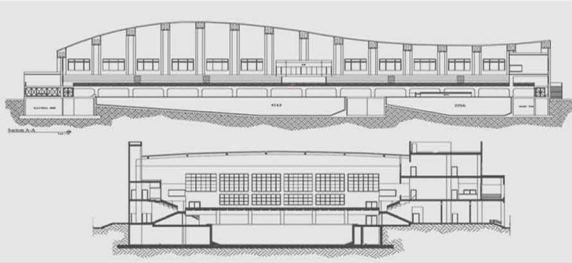
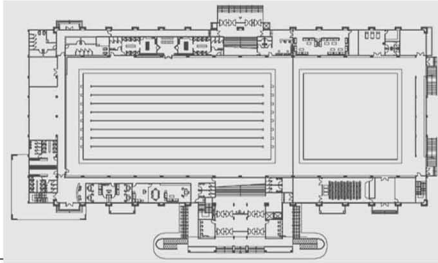
# Sports Facilities

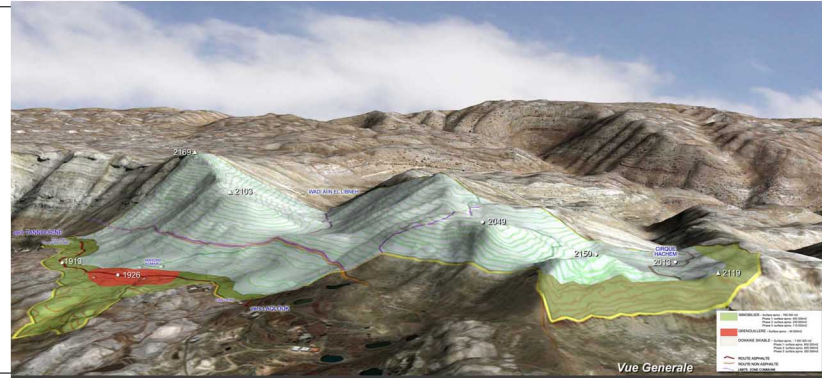
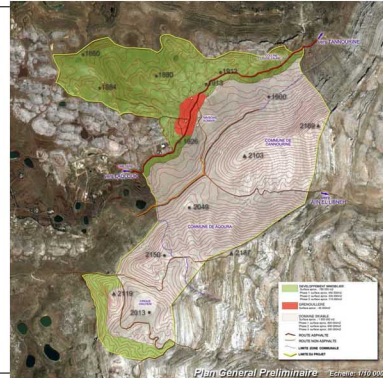
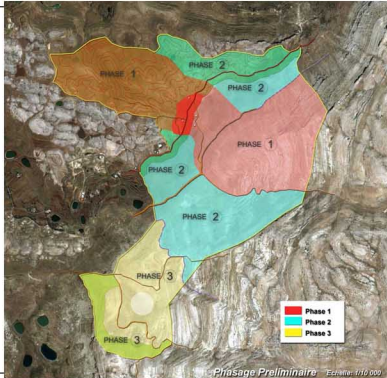
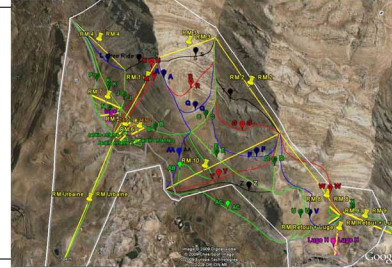
---



ARCHITECTS  
ASSOCIATES

---







# Warehouses

---



ARCHITECTS  
ASSOCIATES

---

# Bocti & Almaza Warehouses



Location: **Dekwaneh, Lebanon**

Client: **GB-LDS**

Date: **2018**

Built-up Area: **11.000 sq.m.**

Construction Cost: **USD 4.500.000**







**Download a PDF copy of this Profile**